



*Resident Simone Sasse, MD
leads a waste audit of
hysterectomy at NYU Langone.*

Establishing effective multi-sector stakeholder partnerships to identify and reach for sustainable healthcare targets

Global Health Connector Partnership
Science Summit at UNGA78, 2023

Cassandra L. Thiel, PhD

Assistant Professor

NYU Langone Health, Dept. of Population Health

NYU Tandon, Civil and Urban Engineering

President & CEO, Clinically Sustainable Consulting LLC



Dr. Thiel is a paid consultant for Philips, BD, AMDR, Stryker, Earth Shift Global, CUE Health, Stanford University, and UCSF Medical School. Dr. Thiel serves on the Advisory Board for the Mass General Center for Health and the Environment and Zabblle, Inc.



Images are not meant to support or criticize any particular company, product, or system.

Dr. Thiel has a young child and wants a livable planet for him and all future children.

Healthcare's Greenhouse Gas Emissions (National Level Studies)



US:
healthcare
sector =
8.5% of
country's
emissions

UK: 5%

Canada: 5%

Australia:
7%

Japan: 5%

(Safely) Decarbonize Care

Karliner, J., S. Slotterback, R. Boyd, B. Ashby and K. Steele (2019). Health Care's Climate Footprint: How the Health Sector Contributes to the Global Climate Crisis and Opportunities for Action, Healthcare Without Harm ARUP: 48.

Sustainable Development Unit. (2016). Carbon Footprint update for NHS in England 2015. Retrieved from http://www.sduhealth.org.uk/documents/publications/2016/Carbon_Footprint_summary_NHS_update_2015_final_v2.pdf

Malik, A., Lenzen, M., McAlister, S., & McGain, F. (2018). The carbon footprint of Australian health care. *The Lancet Planetary Health*, 2(1), e27-e35. doi:[https://doi.org/10.1016/S2542-5196\(17\)30180-8](https://doi.org/10.1016/S2542-5196(17)30180-8)

Eckelman, M. J. and J. Sherman (2016). "Environmental Impacts of the U.S. Health Care System and Effects on Public Health." *PLoS ONE* 11(6): e0157014

Eckelman, M. J., Sherman, J. D., & MacNeill, A. J. (2018). Life cycle environmental emissions and health damages from the Canadian healthcare system: An economic-environmental-epidemiological analysis. *PLoS Medicine*, 15(7), e1002623. doi:10.1371/journal.pmed.1002623

Nansai, K., J. Fry, A. Malik, W. Takayanagi and N. Kondo (2020). "Carbon footprint of Japanese health care services from 2011 to 2015." *Resources, Conservation and Recycling* 152: 104525.

Measuring Environmental Emissions (GHG Reporting Protocol)

- Product design and packaging
 - Raw materials selection
 - Ethically sourced, renewable, or circular
- Energy efficiency & sourcing
- Transportation infrastructure (for patients, workers, and goods)
- Waste management infrastructure and recycling/circularity markets
- Policies supporting or hindering sustainability

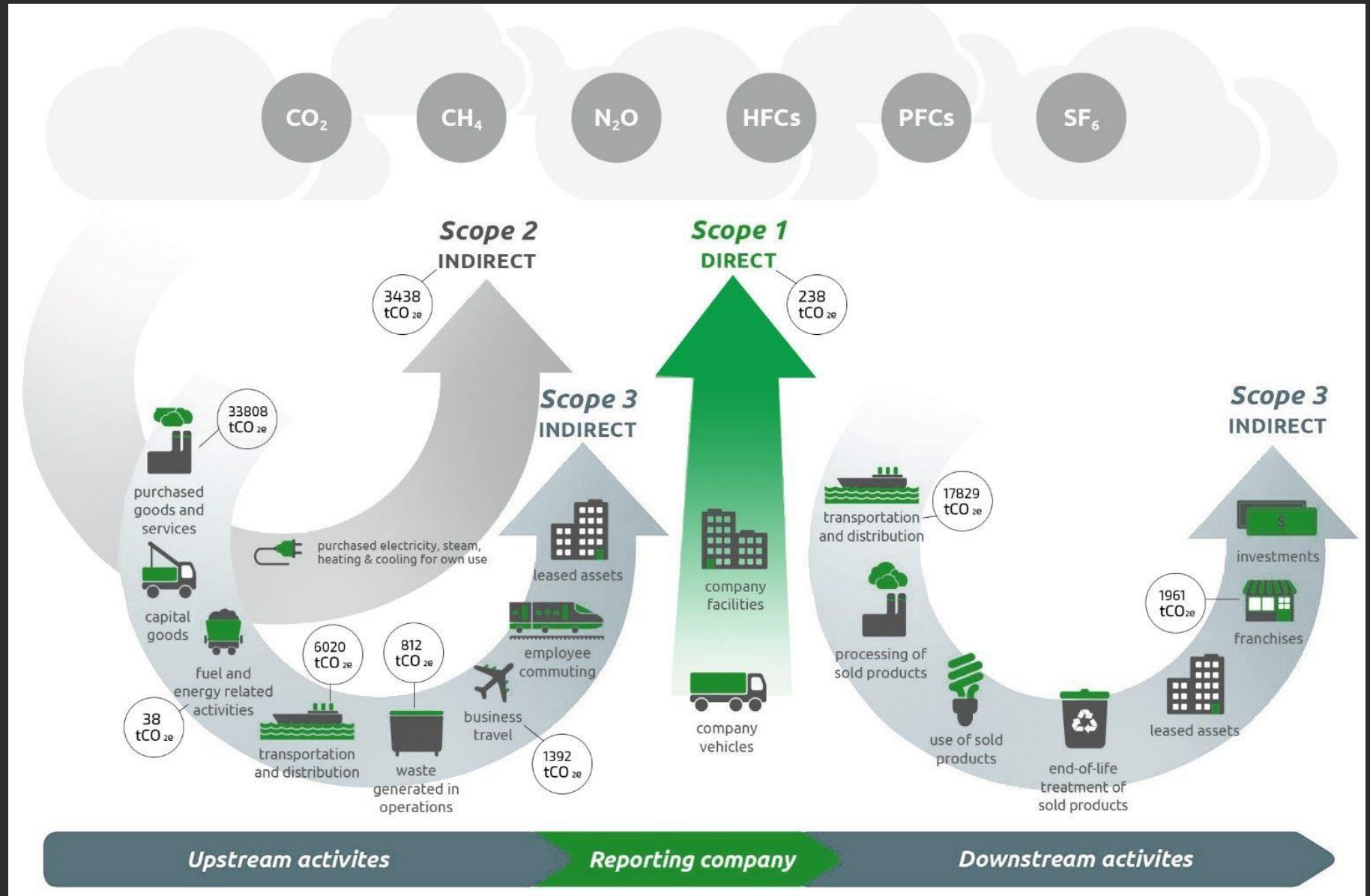
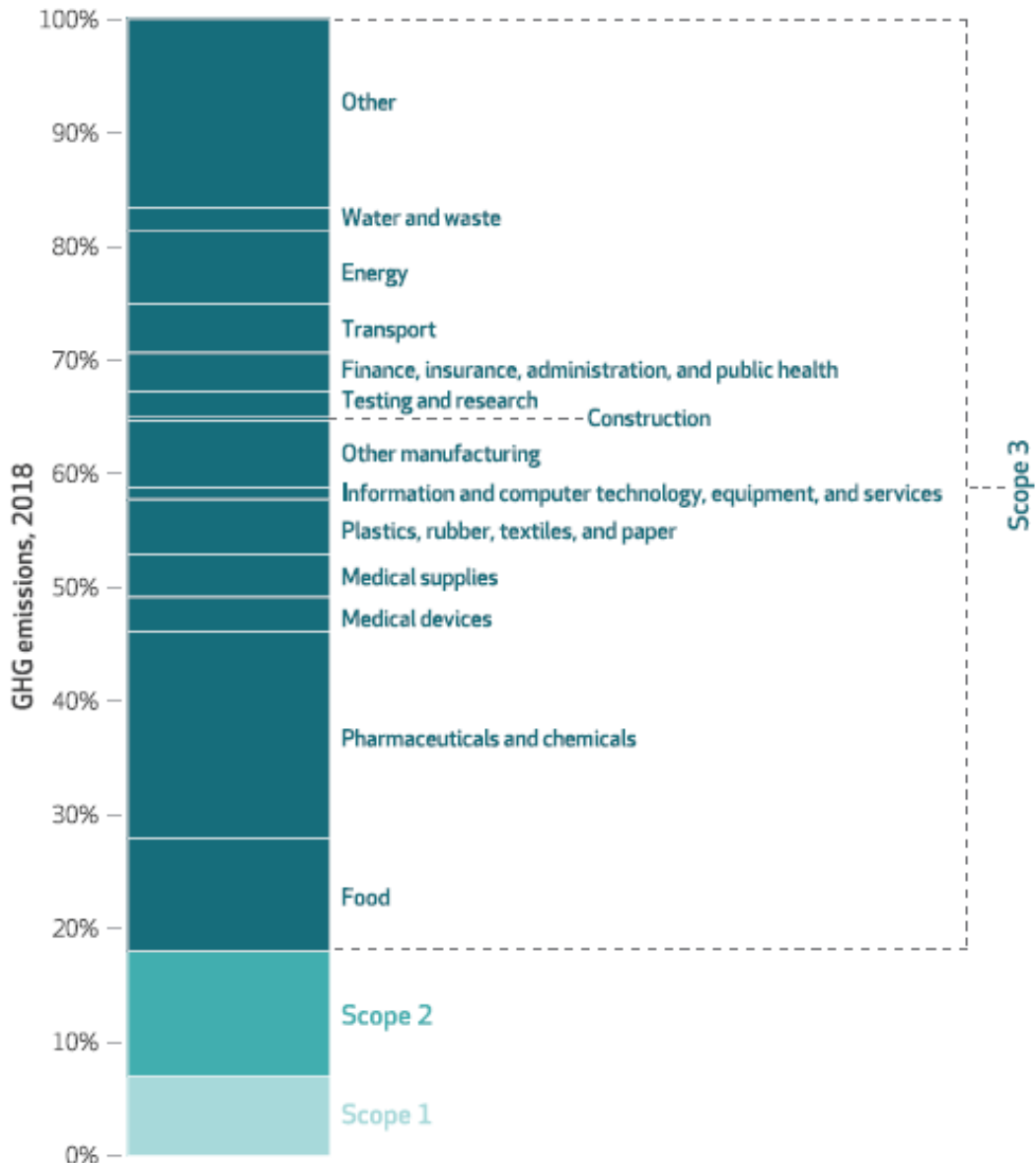


EXHIBIT 2**US national health care greenhouse gas (GHG) emissions by GHG Protocol Scope, 2018**

SOURCES See sources to exhibit 1. **NOTE** Scopes 1-3 are defined in the notes to exhibit 1.

Sources of GHG emissions (for US healthcare, nationally).

- What can healthcare providers do?
- What can healthcare administrators do?
- What can product manufacturers do?
- What can governments do? (regulation AND infrastructure support)
- Which other stakeholders can/should be involved?

Eckelman, M. J., K. Huang, R. Lagasse, E. Senay, R. Dubrow and J. D. Sherman (2020). "Health Care Pollution And Public Health Damage In The United States: An Update: Study examines health care pollution and public health damage in the United States." Health Affairs 39(12): 2071-2079.

Thank you!

Questions?

Cassandra.Thiel@nyulangone.org

@CassandraLThiel (Twitter)

@Clinically_Sustainable (Instagram)

www.clinicallysustainable.org

Research Partners:

- Brooke Sherry, Joel Schuman, Christina Prescott, & Jonathan Kahn (NYU Ophthalmology)
- David Chang, Barb Erny, Alan Robin, David Palmer, and members of the OICS Task Force / EyeSustain
- Melissa Bilec, Noe Copley-Woods (U. of Pittsburgh), Jonathan Slutzman (Mass Gen), Jodi Sherman and Michael (Yale U.) , Jonathan Gross (TX Childrens)
- Andy Cassels-Brown, Peter Thomas, Jorge Vendries, Inge Steinbach, Rachel Stancliffe, Hena Goel (Eyeefficiency) & Members of the IAPB ES work group
- Thulasiraj Ravilla, R. Venkatesh, Vengadesan (Aravind)
- Trainees: Simone Sasse, Amy Bleasdale, Roshan Poohel, Dhruvi Joshi, Punima Prasad, David Kleyn, Jenna Tauber, Anthony Chua, Ruhana Amin, Pallavi Sreedhar, Hannah Greene, Hannah Bockius, Genny Silva, Yiming Huang, and many many others!

